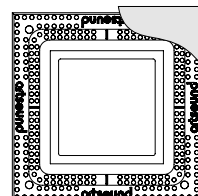
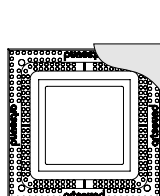
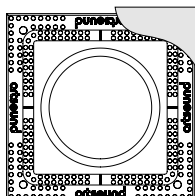
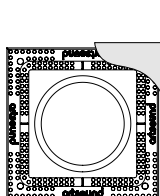
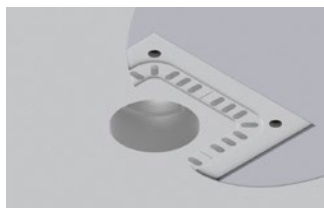
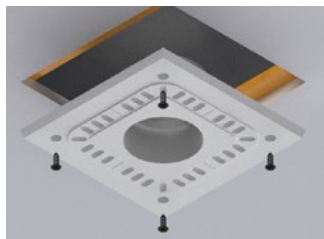


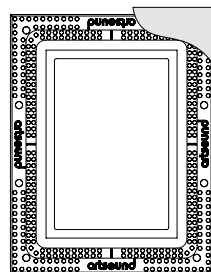
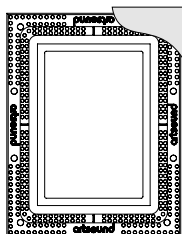
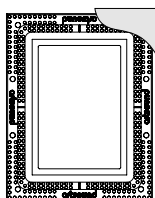
FLUSH MOUNT KIT

**A cap to fit every size,
only this one's invisible**

This is an inwall kit that allows you to conceal your speaker in the ceiling. The kit, or 'flush mount' ensures that the Intiimi loudspeaker's design grille is exactly level with the surface of your ceiling. In other words, they blend in with each other without being conspicuous. No more differences in height, no changes in relief, however small. The flush mounts were developed for an easy and inconspicuous fit, which works. Available for all Intiimi models.



	FLKIT R02040	FLKIT R02060	FLKIT SQ2040	FLKIT SQ2060
material	composite	composite	composite	composite
inner dim. (h x w)	177,3mm	237,3mm	167,5 x 167,5mm	237,5 x 237,5mm
dim. (h x w x d)	280 x 280 x 14mm	350 x 350 x 14mm	280 x 280 x 14mm	350 x 350 x 14mm
suitable for	R02040	R02060	SQ2040	SQ2060



	FLKIT RE2040	FLKIT RE2060	FLKIT RE2080
material	composite	composite	composite
inner dim. (h x w)	221,5 x 150,5mm	296,5 x 206,7mm	369,1 x 261,1mm
dim. (h x w x d)	330 x 260 x 14mm	409 x 319 x 14mm	482 x 374 x 14mm
suitable for	RE2040	RE2060	RE2080